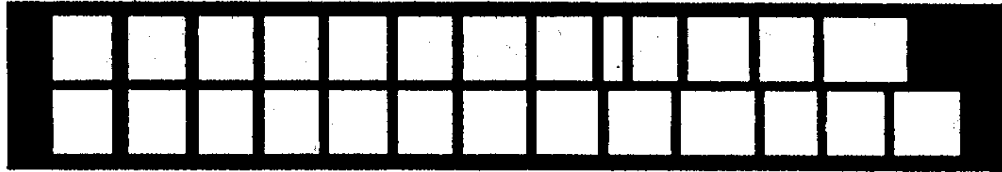
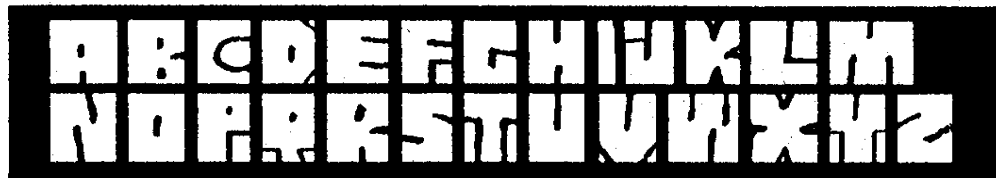


LETTERING

The **LADDER LETTERS** are very puzzling to your audience, yet they are simple to do. Begin by painting a ladder with a block for each letter:



Lightly pencil in where you will add paint to complete the letters:



And finally the completed letters:



Remember to leave space between words:



The **LINE LETTERS** are accomplished by painting part of the letters and then finishing them during the lesson:



PAINTING

Paint only partial pictures and then finish them during the lesson:



The mysterious lettering and unfinished pictures are sure to capture the curiosity of your audience. It is important to continue painting as you teach; it is the painting that keeps your audience's attention.

Make your painting simple enough that by adding a few quick strokes it will make perfect sense.

May God bless you as you begin **ILLUSTRATING THE GOSPEL!**